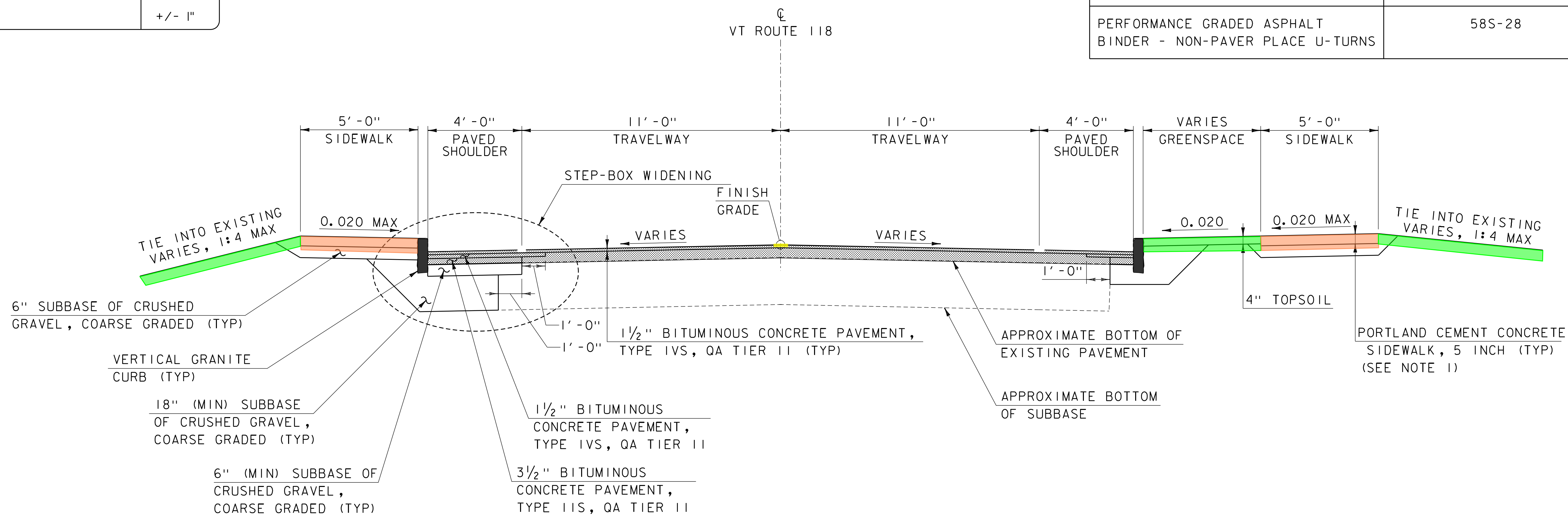


EXISTING VT ROUTE 118 TYPICAL SECTION

SCALE: 3/8" = 1'-0"

MATERIAL TOLERANCES (IF USED ON PROJECT)	
SURFACE	
- PAVEMENT (TOTAL THICKNESS)	+/- 1/4"
- AGGREGATE SURFACE COURSE	+/- 1/2"
SUBBASE	
SAND BORROW	+/- 1"

BITUMINOUS CONCRETE PAVEMENT SUPERPAVE MIXTURE DESIGN CRITERIA	
DESIGN LANE/DESIGN LIFE ESAL	300,000 - 1,500,000 EASLS
DESIGN NUMBER OF GYRATIONS	65
PERFORMANCE GRADE ASPHALT BINDER	58E-28
PERFORMANCE GRADED ASPHALT BINDER - NON-PAVER PLACE U-TURNS	58S-28



PROPOSED VT ROUTE 118 TYPICAL SECTION

SCALE: 3/8" = 1'-0"

STA. 124+59 TO 131+43

NOTES

- THE MINIMUM CONCRETE DEPTH FOR SIDEWALKS CROSSING COMMERCIAL DRIVES WILL BE 8".

REV	DESCRIPTION	DATE

VAOT PROJECT NO. TAP TA21(S)
 FILENAME 2212980100typ
 MODEL NAME 1001
 SCALE AS SHOWN
 DATE APRIL 2024

DESIGNED ZAR
 DRAWN ZAR
 CHECKED XXX

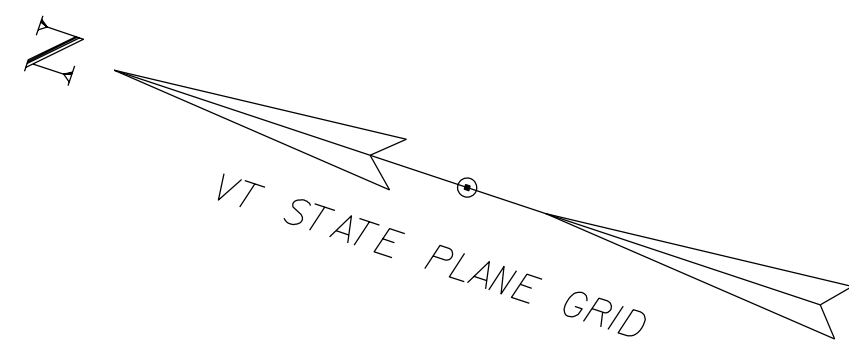
This document is prepared as an instrument of service and shall remain the property of Hoyle, Tanner. It may not be used, reproduced, disseminated or transferred in any manner, including electronically, for any other purpose than this project, without the written permission of Hoyle, Tanner.

HOYLE TANNER
 125 College Street, 4th Floor • Burlington, VT 05401
 (802) 860-1331 • www.hoyletanner.com

TOWN OF MONTGOMERY
 MONTGOMERY, VERMONT
 MONTGOMERY CENTER STREETSCAPE
 ROADWAY TYPICAL SECTION (1 OF 5)

PROJECT NO. 22.129801.00
 SHEET NO. **5**
 SHEET 5 OF 106

4/29/2025 3:15:21 PM V:\PROJECTS\Montgomery-VT22_128801_00\Montgomery-Center-Streetscape2-CADD\CutSheets\2212980100typ.dgn



N/
DEUSO,
MICHAEL J. & MARY H.

PUMP STATION,
BY OTHERS

LIMIT OF PROPOSED
PAVED APRRON

PROPOSED RAMP
TYPE 2

PROPOSED
SIDEWALK (TYP)

TOWN OF
MONTGOMERY

BIKE RACK
PLANTERS
(TYP)

BEGIN APPROACH
STA 107+00

06+00

107+00

108+00

109+00

110+00

111+00

MATCHLINE STA 111+75

APPROX. EXISTING R.O.W.

BEGIN PROJECT
STA 109+00

BENCHMARK
BOLT IN LIGHT
ELEV. = 502.87

SCALE 1" = 20'-0"
20 0 20

PORTLAND CEMENT CONCRETE SIDEWALK, 5 INCH
STA 107+84.35, LT - STA 111+75.00, LT
STAMPED CONCRETE ISLAND, 8 INCH
STA 110+84.05, LT - STA 111+24.50, LT

BITUMINOUS CONCRETE PAVEMENT, NON-PAVER
PLACED, TYPE IVS
STA 111+47.39, RT - STA 112+12.55, RT

N/
PHILLIPS,
MARSHA

VT ROUTE 118 CURVE DATA

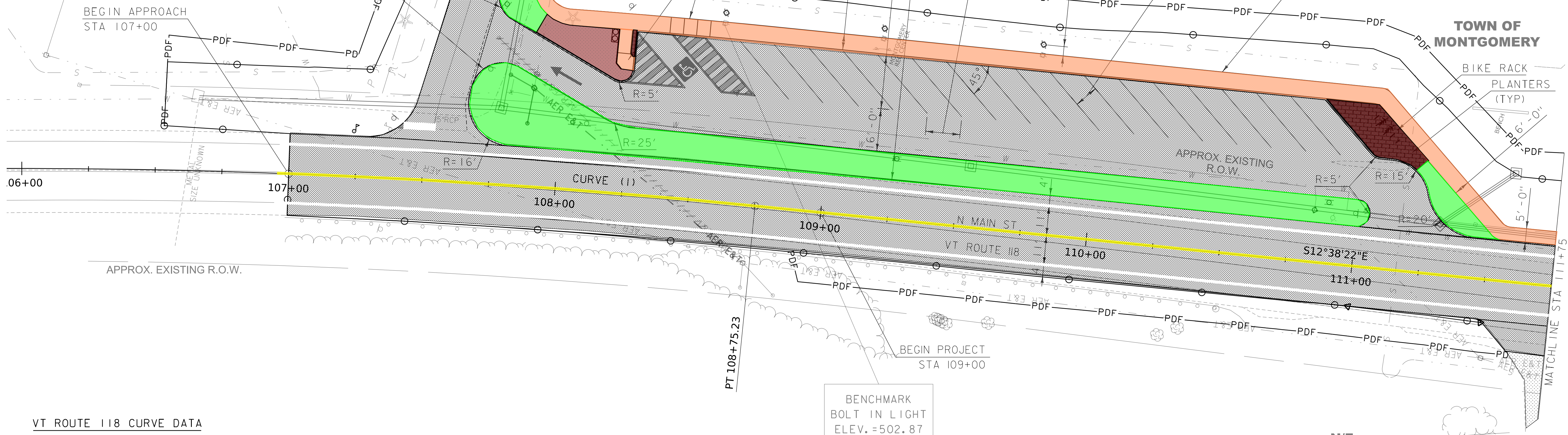
CURVE (1)

DELTA = 16°51'14"
D = 02°02'47"
R = 2800.00'
T = 414.81'
L = 823.64'
E = 30.56'

REMOVE AND RESET MAILBOX, SINGLE SUPPORT
STA 107+23.81, O/S 16.99 LT (EXISTING STA 107+37.24 O/S 18.38 LT)

AGGREGATE SURFACE COURSE
STA 107+76.92, LT - STA 107+89.99, LT
STA 107+92.50, LT - STA 108+13.74, LT

VERTICAL GRANITE CURB
STA 107+85.24, LT - STA 111+75.00, LT



REV	DESCRIPTION	DATE

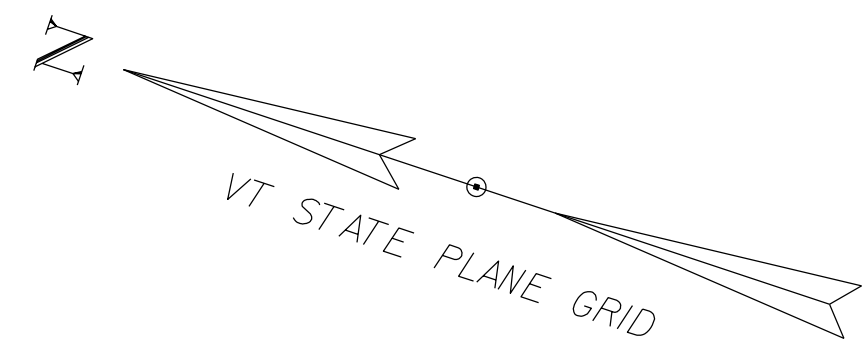
FILE NAME	DESIGNED	DRAWN	CHECKED	DATE
2212980100bdr.lay	ZAR	ZAR	XXX	APRIL 2024
MODEL NAME				
SCALE				
AS SHOWN				

HOYLE TANNER
125 College Street, 4th Floor • Burlington, VT 05401
(802) 860-1331 • www.foyletanner.com

TOWN OF MONTGOMERY
MONTGOMERY CENTER STREETSCAPE
LAYOUT SHEET (1 OF 7)

PROJECT NO. 22.129801.00
SHEET NO. **14**
SHEET 14 OF 106

4/29/2025 3:15:36 PM V:\PROJECTS\Montgomery-VT22_128801_00-Montgomery-Center-Streetscape\2-CADD\CutSheets\2212980100bdr.lay.dgn

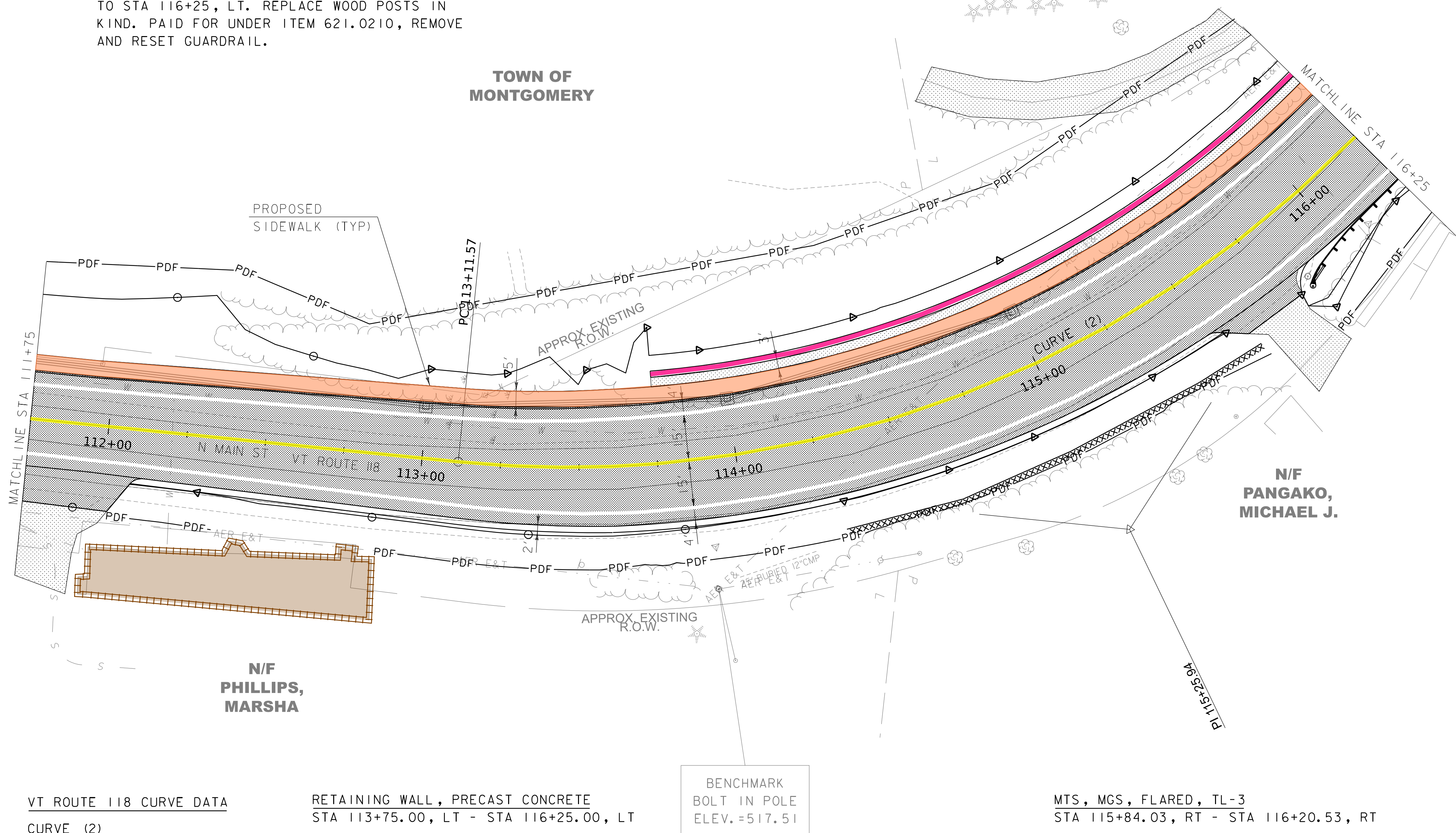


SHEET NOTES:

I. REMOVE AND RESET CABLE RAIL STA 115+87, LT TO STA 116+25, LT. REPLACE WOOD POSTS IN KIND. PAID FOR UNDER ITEM 621.0210, REMOVE AND RESET GUARDRAIL.

TOWN OF MONTGOMERY

TOWN OF MONTGOMERY



VT ROUTE 118 CURVE DATA

CURVE (2)
 DELTA = 62° 58' 25"
 D = 16° 22' 13"
 R = 350.00'
 T = 214.37'
 L = 384.68'
 E = 60.43'

RETAINING WALL, PRECAST CONCRETE
 STA 113+75.00, LT - STA 116+25.00, LT

BENCHMARK
 BOLT IN POLE
 ELEV. = 517.51

SCALE 1" = 20'-0"
 20 0 20

MTS, MGS, FLARED, TL-3
 STA 115+84.03, RT - STA 116+20.53, RT

STEEL BEAM GUARDRAIL
 STA 116+20.53, RT - STA 116+25.00, RT

PORTLAND CEMENT CONCRETE SIDEWALK, 5 INCH
 STA 111+75.00, LT - STA 116+25.00, LT

VERTICAL GRANITE CURB
 STA 111+75.00, LT - STA 116+25.00, LT

REMOVE AND RESET GUARDRAIL
 STA 115+86.93, LT - STA 116+25.00, LT

BITUMINOUS CONCRETE PAVEMENT, NON-PAVER PLACED, TYPE IVS
 STA 115+50.83, RT - STA 115+85.90, RT

REV	DESCRIPTION	DATE

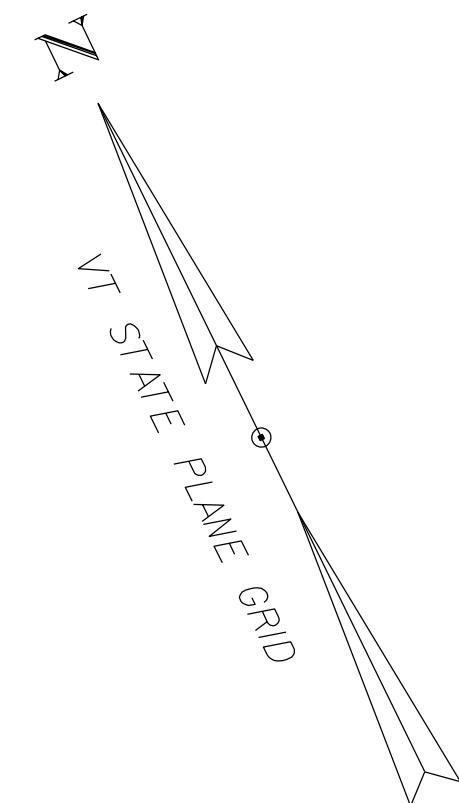
PROJECT NO.	DATE
22.129801.00	APRIL 2024

DESIGNED	DRAWN	CHECKED	DATE
ZAR	ZAR	XXX	APRIL 2024

HOYLE TANNER
 125 College Street, 4th Floor • Burlington, VT 05401
 (802) 860-1331 • www.foyletanner.com

TOWN OF MONTGOMERY
 MONTGOMERY, VERMONT
 MONTGOMERY CENTER STREETScape
 LAYOUT SHEET (2 OF 7)

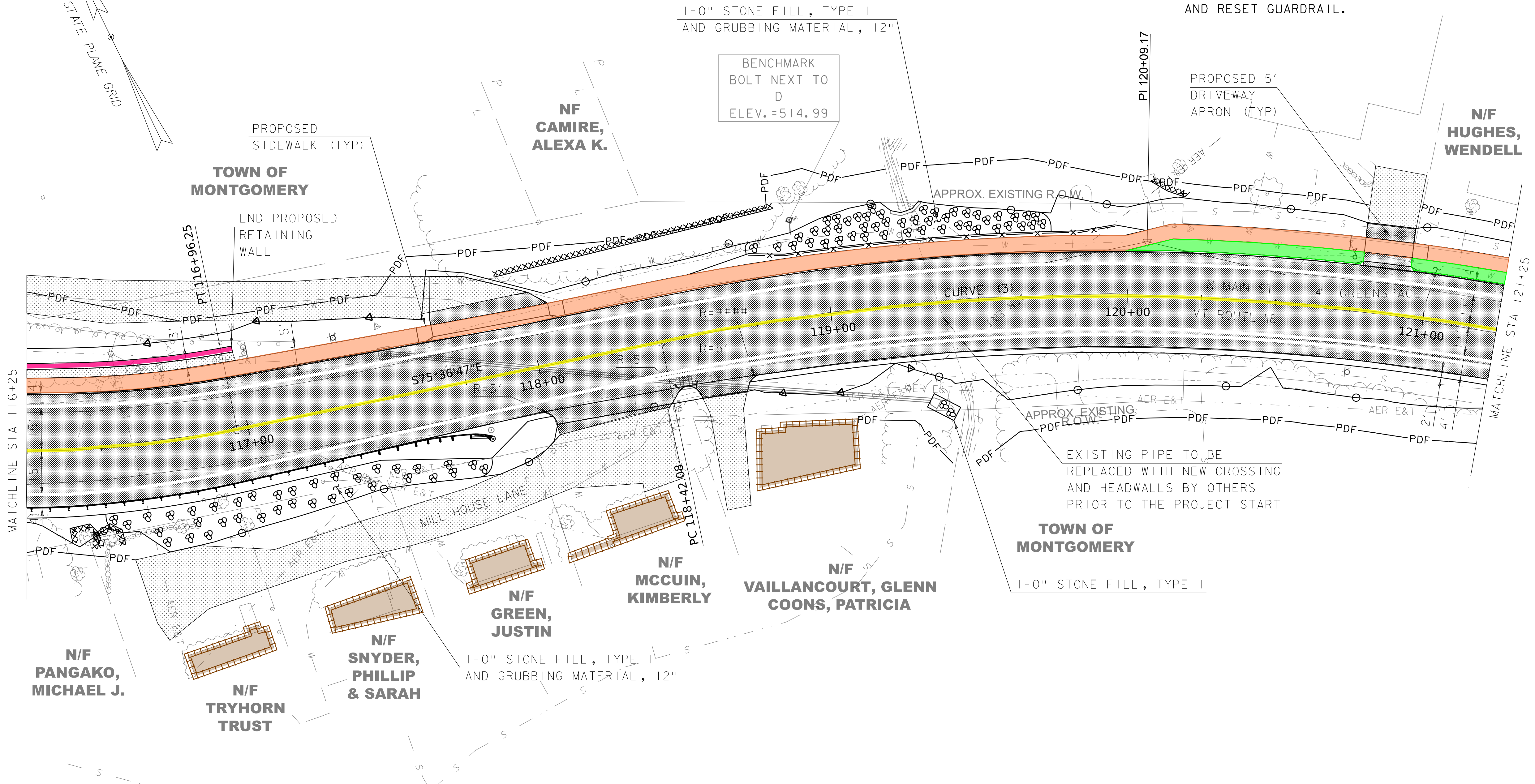
4/29/2025 3:15:37 PM V:\PROJECTS\Montgomery-VT22_129801_00-Montgomery-Center-Streetscape2-CADD\CutSheets\2212980100bdr_Lay.dgn



**N/F
GENDRON, ROBERT C. & DIANE
LIFE ESTATE**

SHEET NOTES:

1. REMOVE AND RESET CABLE RAIL STA 116+25, LT TO STA 117+22, LT. REPLACE WOOD POSTS IN KIND. PAID FOR UNDER ITEM 621.0210, REMOVE AND RESET GUARDRAIL.



1-0" STONE FILL, TYPE I
AND GRUBBING MATERIAL, 12"

BENCHMARK
BOLT NEXT TO
D
ELEV. = 514.99

PROPOSED 5'
DRIVEWAY
APRON (TYP)

EXISTING PIPE TO BE
REPLACED WITH NEW CROSSING
AND HEADWALLS BY OTHERS
PRIOR TO THE PROJECT START

**TOWN OF
MONTGOMERY**

1-0" STONE FILL, TYPE I

1-0" STONE FILL, TYPE I
AND GRUBBING MATERIAL, 12"

VT ROUTE 118 CURVE DATA
CURVE (3)
DELTA = 25° 07' 10"
D = 07° 38' 22"
R = 750.00'
T = 167.09'
L = 328.81'
E = 18.39'

STONE FILL, TYPE I
STA 116+50.00, RT - STA 117+78.32, RT
STA 118+50.00, LT - STA 119+75.00, LT
STA 119+29.68, RT - STA 119+41.09, RT

GRUBBING MATERIAL, 12 INCH
STA 116+50.00, RT - STA 117+78.32, RT
STA 118+50.00, LT - STA 119+75.00, LT

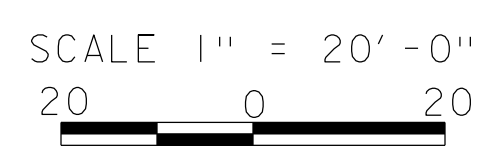
PORTLAND CEMENT CONCRETE SIDEWALK, 5 INCH
STA 116+25.00, LT - STA 121+25.00, LT

VERTICAL GRANITE CURB
STA 116+25.00, LT - STA 117+52.33, LT
STA 118+19.05, LT - STA 120+76.96, LT
STA 120+94.68, LT - STA 121+25.00, LT

**BITUMINOUS CONCRETE PAVEMENT,
NON-PAVER PLACED, TYPE IVS**
STA 117+52.32, LT - STA 118+19.05, LT
STA 117+97.39, RT - STA 118+47.66, RT
STA 118+47.66, RT - STA 118+73.54, RT
STA 120+77.94, LT - STA 120+93.70, LT

PLANK RAIL FENCE
STA 118+75.65, LT - STA 119+95.83, LT

REMOVE AND RESET GUARDRAIL
STA 116+25.00, LT - STA 117+21.65, LT



MTS, MGS, FLARED, TL-3
STA 117+41.52, RT - STA 117+80.78, RT

STEEL BEAM GUARDRAIL
STA 116+25.00, RT - STA 117+41.52, RT

REMOVE AND RESET MAILBOX, SINGLE SUPPORT
STA 120+74.05, LT

RETAINING WALL, PRECAST CONCRETE
STA 116+25.00, LT - STA 117+00.00, LT

REV	DESCRIPTION	DATE

WAT PROJECT NO.	TAP (TAZ) (S)	DESIGNED	DRAWN	CHECKED	DATE
22129801000	18	ZAR	ZAR	XXX	APRIL 2024

**HOYLE
TANNER**

125 College Street, 4th Floor • Burlington, VT 05401
(802) 860-1331 • www.hoyletanner.com

TOWN OF MONTGOMERY
MONTGOMERY, VERMONT

MONTGOMERY CENTER STREETSCAPE

LAYOUT SHEET (3 OF 7)

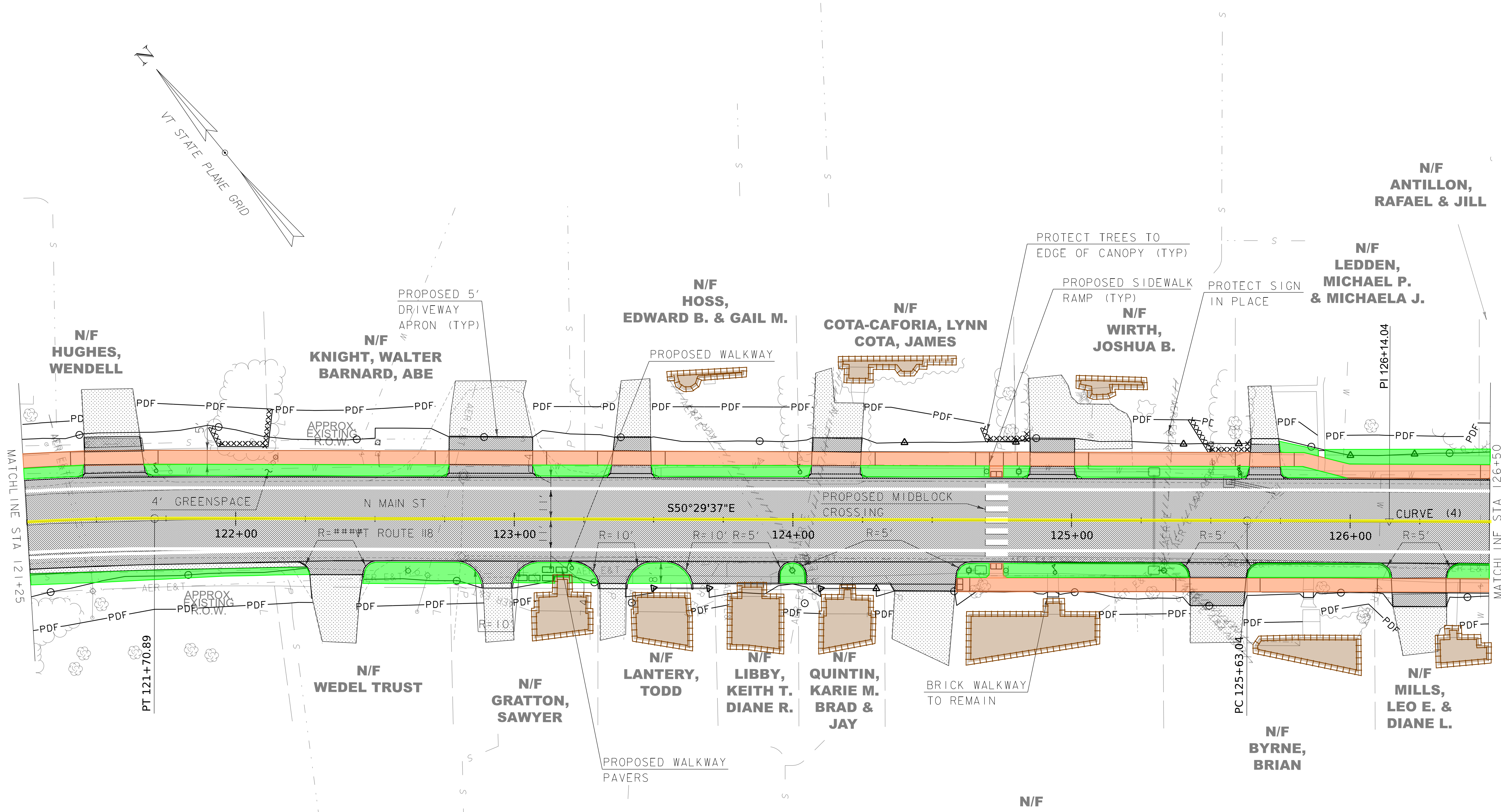
PROJECT NO. 22.129801.00
SHEET NO.

16

SHEET 16 OF 106

4/29/2025 3:15:36 PM V:\PROJECTS\Montgomery-VT22_128801_00\Montgomery-Center-Streetscape2-CADD\CutSheets\22129801000dr_Lay.dgn

4/29/2025 3:15:36 PM V:\PROJECTS\Montgomery-VT22_128801_00-Montgomery-Center-Streetscape2-CADD\CutSheets\2212980100bdr_Lay.dgn



TOWN OF MONTGOMERY

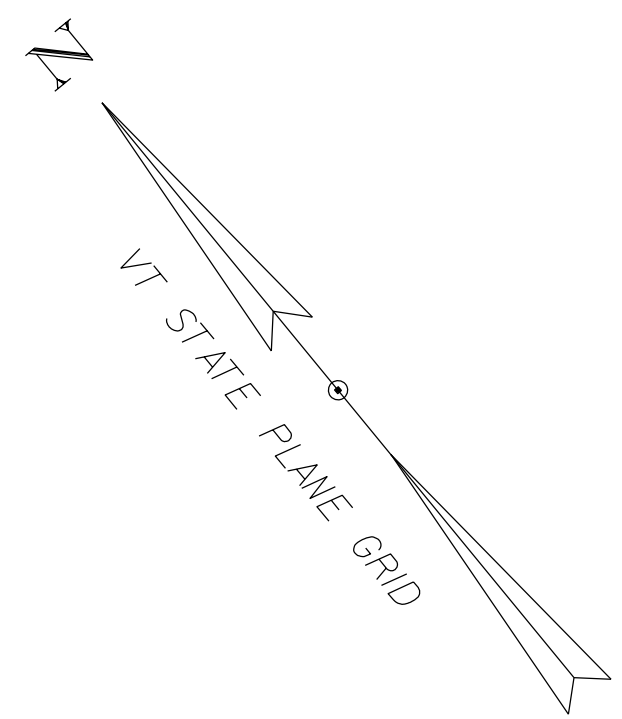
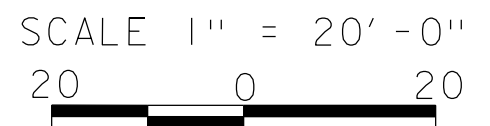
PORTLAND CEMENT CONCRETE SIDEWALK, 5 INCH
 STA 121+25.00, LT - STA 126+25.00, LT
 STA 124+58.58, RT - STA 126+25.00, RT

VT ROUTE 118 CURVE DATA
 CURVE (4)
 DELTA = 00°23'22"
 D = 00°22'55"
 R = 15000.00'
 T = 50.99'
 L = 101.99'
 E = 0.09'

VERTICAL GRANITE CURB
 STA 121+25.00, LT - STA 121+45.41, LT
 STA 121+68.72, LT - STA 122+75.60, LT
 STA 122+49.53, RT - STA 122+88.76, RT
 STA 122+98.67, RT - STA 123+30.67, RT
 STA 123+13.46, LT - STA 123+33.42, LT
 STA 123+50.21, LT - STA 124+05.47, LT
 STA 123+94.81, RT - STA 124+04.81, RT
 STA 124+25.06, LT - STA 124+84.05, LT
 STA 124+58.07, RT - STA 125+42.49, RT
 STA 125+05.05, LT - STA 125+62.53, LT
 STA 125+62.25, RT - STA 126+15.16, RT
 STA 125+76.11, LT - STA 126+50.00, LT
 STA 126+34.62, RT - STA 126+50.00, RT

REMOVE AND RESET MAILBOX, SINGLE SUPPORT
 STA 121+71.40, LT
 STA 123+26.00, RT
 STA 124+02.51, LT
 STA 124+94.12, RT
 STA 125+60.50, LT

BITUMINOUS CONCRETE PAVEMENT, NON-PAVER PLACED, TYPE IVS
 STA 121+46.39, LT - STA 121+67.57, LT
 STA 122+16.15, RT - STA 122+55.19, RT
 STA 122+76.55, LT - STA 123+06.55, LT
 STA 122+83.75, RT - STA 123+03.67, RT
 STA 123+25.64, RT - STA 123+99.81, RT
 STA 123+34.54, LT - STA 123+49.18, LT
 STA 123+99.81, RT - STA 124+63.57, RT
 STA 124+06.51, LT - STA 124+24.10, LT
 STA 124+85.05, LT - STA 125+01.05, LT
 STA 125+37.47, RT - STA 125+67.78, RT
 STA 125+63.59, LT - STA 125+75.05, LT
 STA 126+09.85, RT - STA 126+39.55, RT



REV	DESCRIPTION	DATE

W/OT PROJECT NO.	TAP (TA21(S))	DESIGNED	DRAWN	CHECKED	DATE
2212980100bdr		ZAR	ZAR	XXX	APRIL 2024

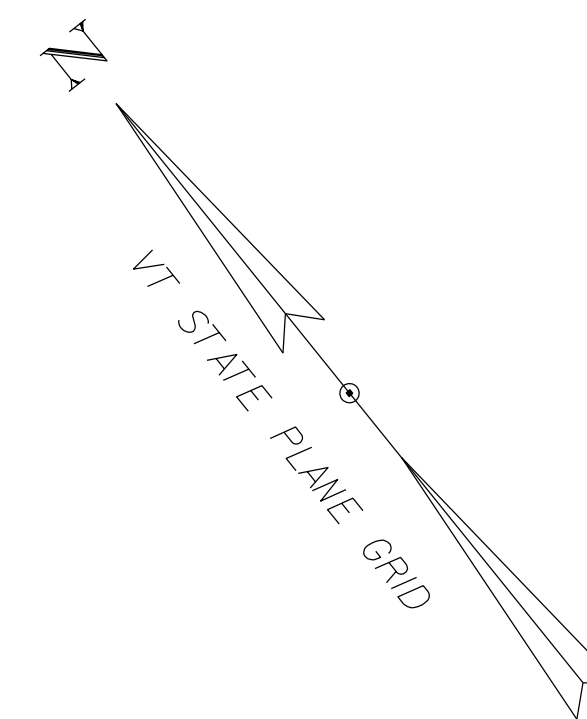
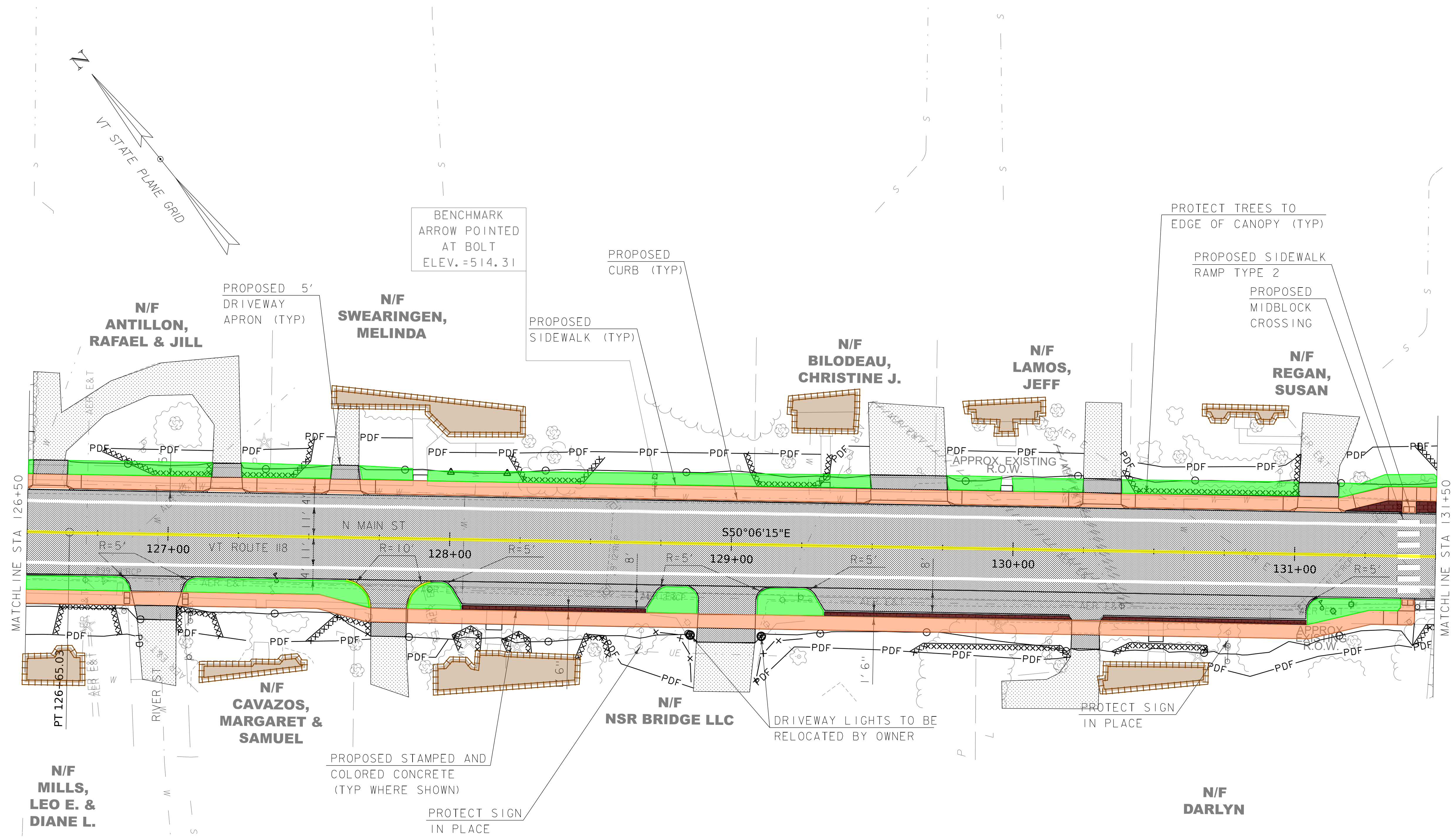
HOYLE TANNER
 125 College Street, 4th Floor • Burlington, VT 05401
 (802) 860-1331 • www.foyletanner.com

TOWN OF MONTGOMERY
 MONTGOMERY, VERMONT
 MONTGOMERY CENTER STREETSCAPE
 LAYOUT SHEET (4 OF 7)

PROJECT NO. 22.129801.00
 SHEET NO.
17
 SHEET 17 OF 106

This document is prepared as an instrument of service and shall remain the property of Hoyle, Tanner. It may not be used, reproduced, disseminated or transferred in any manner, including electronically, for any other purpose than this project, without the written permission of Hoyle, Tanner.

4/29/2025 3:15:39 PM V:\PROJECTS\Montgomery-VT22_128801_00-Montgomery-Center-Streetscape\2-CADD\CutSheets\2212980100bdr_Lay.dgn



BENCHMARK
ARROW POINTED
AT BOLT
ELEV. = 514.31

PROTECT TREES TO
EDGE OF CANOPY (TYP)

PROPOSED SIDEWALK
RAMP TYPE 2
PROPOSED
MIDBLOCK
CROSSING

MATCHLINE STA 126+50

MATCHLINE STA 131+50

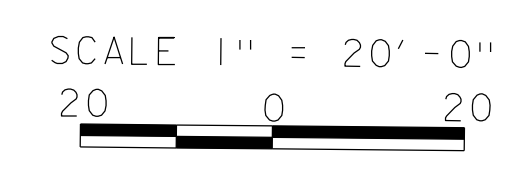
PORTLAND CEMENT CONCRETE SIDEWALK, 5 INCH
 STA 126+25.00, LT - STA 131+50.00, LT
 STA 126+25.00, RT - STA 131+43.14, RT

VERTICAL GRANITE CURB
 STA 126+50.00, LT - STA 126+50.65, LT
 STA 126+50.00, RT - STA 126+88.55, RT
 STA 126+64.70, LT - STA 127+13.67, LT
 STA 127+03.64, RT - STA 127+72.53, RT
 STA 127+27.22, LT - STA 127+55.85, LT
 STA 127+69.25, LT - STA 129+48.31, LT
 STA 127+85.07, RT - STA 128+88.65, RT
 STA 129+09.00, RT - STA 130+20.31, RT
 STA 129+77.54, LT - STA 130+23.44, LT
 STA 130+32.57, RT - STA 131+50.00, RT
 STA 130+39.12, LT - STA 130+99.60, LT
 STA 131+16.25, LT - STA 131+50.00, LT

**REMOVE AND RESET MAILBOX,
SINGLE SUPPORT**
 STA 127+38.31, RT
 STA 131+10.05, RT

STAMPED CONCRETE ISLAND, 8 INCH
 STA 127+99.66, RT - STA 128+88.15, RT
 STA 129+27.56, RT - STA 130+21.31, RT
 STA 130+31.60, RT - STA 131+04.86, RT
 STA 131+16.90, LT - STA 131+37.90, LT
 STA 131+42.90, LT - STA 131+68.89, LT

**BITUMINOUS CONCRETE PAVEMENT, NON-PAVER
PLACED, TYPE IVS**
 STA 126+51.66, LT - STA 126+63.73, LT
 STA 126+82.05, RT - STA 127+10.54, RT
 STA 127+14.74, LT - STA 127+26.15, LT
 STA 127+56.94, LT - STA 127+68.15, LT
 STA 127+67.36, RT - STA 127+89.93, RT
 STA 127+94.93, RT - STA 128+74.93, RT
 STA 129+22.56, RT - STA 131+09.36, RT
 STA 129+49.27, LT - STA 129+76.48, LT
 STA 130+21.31, RT - STA 130+31.60, RT
 STA 130+24.45, LT - STA 130+38.11, LT
 STA 131+00.65, LT - STA 131+15.25, LT



REV	DESCRIPTION	DATE

VDOT PROJECT NO. TAP TA21(S)	DESIGNED ZAR	CHECKED XXX	DATE APRIL 2024
FILENAME 2212980100bdr_Lay	DRAWN ZAR	AS SHOWN XXX	THIS DOCUMENT IS PREPARED AS AN INSTRUMENT OF SERVICE AND SHALL REMAIN THE PROPERTY OF HOYLE, TANNER. IT MAY NOT BE USED, REPRODUCED, DISSEMINATED OR TRANSFERRED IN ANY MANNER, INCLUDING ELECTRONICALLY, FOR ANY OTHER PURPOSE THAN THIS PROJECT, WITHOUT THE WRITTEN PERMISSION OF HOYLE, TANNER.

HOYLE TANNER

125 College Street, 4th Floor • Burlington, VT 05401
(802) 860-1331 • www.hoyletanner.com

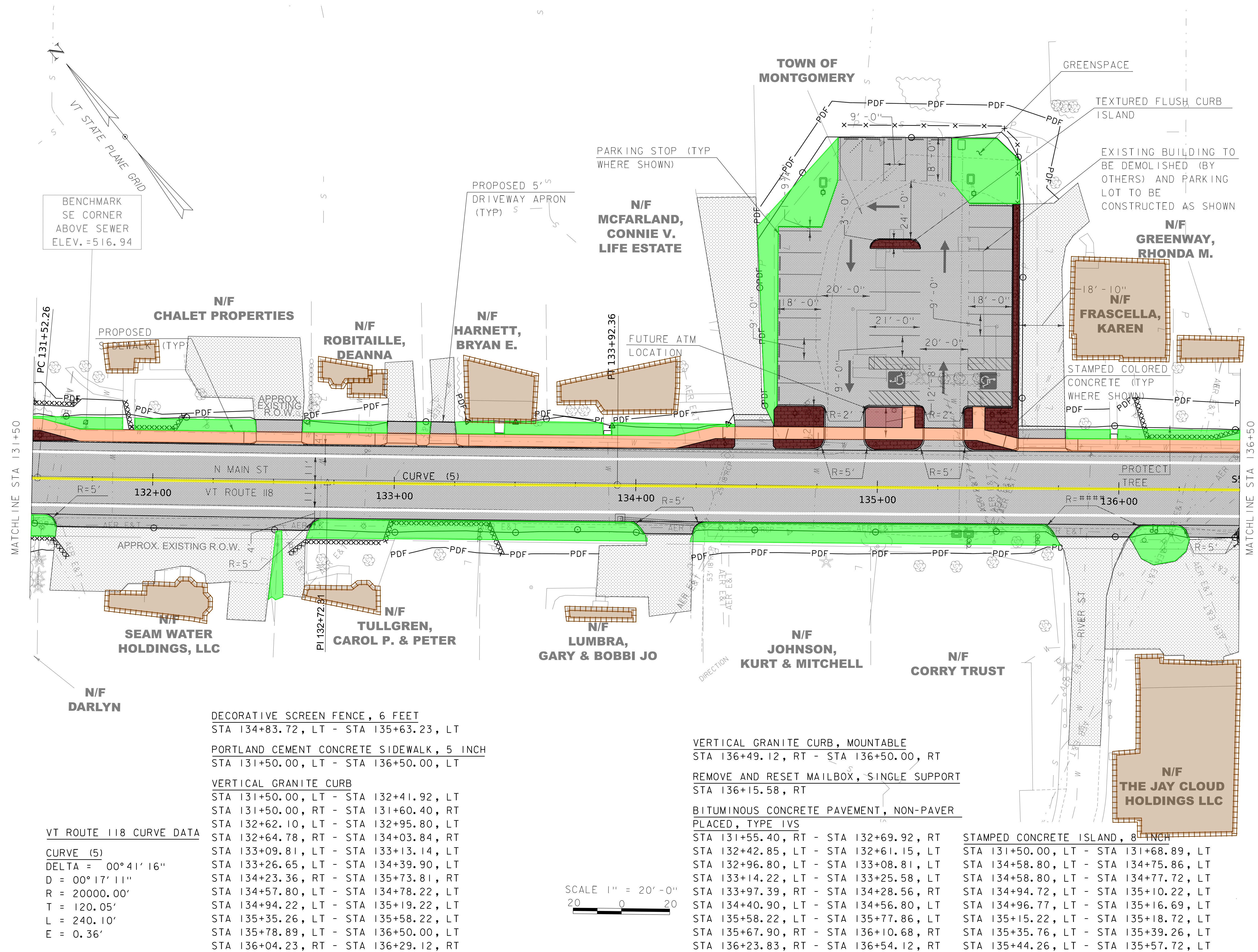
TOWN OF MONTGOMERY
MONTGOMERY, VERMONT

MONTGOMERY CENTER STREETSCAPE

LAYOUT SHEET (5 OF 7)

PROJECT NO. 22.129801.00
SHEET NO. **18**
SHEET 18 OF 106

4/29/2025 3:15:39 PM V:\PROJECTS\Montgomery-VT22_128801_00-Montgomery-Center-Streetscape2-CADD\CutSheets\2212980100hdr_Lay.dgn



BENCHMARK SE CORNER ABOVE SEWER ELEV. = 516.94

VT STATE PLANE GRID

MATCHLINE STA 131+50

MATCHLINE STA 136+50

VT ROUTE 118 CURVE DATA
 CURVE (5)
 DELTA = 00° 41' 16"
 D = 00° 17' 11"
 R = 20000.00'
 T = 120.05'
 L = 240.10'
 E = 0.36'

DECORATIVE SCREEN FENCE, 6 FEET
 STA 134+83.72, LT - STA 135+63.23, LT
 PORTLAND CEMENT CONCRETE SIDEWALK, 5 INCH
 STA 131+50.00, LT - STA 136+50.00, LT
 VERTICAL GRANITE CURB
 STA 131+50.00, LT - STA 132+41.92, LT
 STA 131+50.00, RT - STA 131+60.40, RT
 STA 132+62.10, LT - STA 132+95.80, LT
 STA 132+64.78, RT - STA 134+03.84, RT
 STA 133+09.81, LT - STA 133+13.14, LT
 STA 133+26.65, LT - STA 134+39.90, LT
 STA 134+23.36, RT - STA 135+73.81, RT
 STA 134+57.80, LT - STA 134+78.22, LT
 STA 134+94.22, LT - STA 135+19.22, LT
 STA 135+35.26, LT - STA 135+58.22, LT
 STA 135+78.89, LT - STA 136+50.00, LT
 STA 136+04.23, RT - STA 136+29.12, RT

SCALE 1" = 20'-0"
 20 0 20

VERTICAL GRANITE CURB, MOUNTABLE
 STA 136+49.12, RT - STA 136+50.00, RT
 REMOVE AND RESET MAILBOX, SINGLE SUPPORT
 STA 136+15.58, RT
 BITUMINOUS CONCRETE PAVEMENT, NON-PAVER PLACED, TYPE IVS
 STA 131+55.40, RT - STA 132+69.92, RT
 STA 132+42.85, LT - STA 132+61.15, LT
 STA 132+96.80, LT - STA 133+08.81, LT
 STA 133+14.22, LT - STA 133+25.58, LT
 STA 133+97.39, RT - STA 134+28.56, RT
 STA 134+40.90, LT - STA 134+56.80, LT
 STA 135+58.22, LT - STA 135+77.86, LT
 STA 135+67.90, RT - STA 136+10.68, RT
 STA 136+23.83, RT - STA 136+54.12, RT

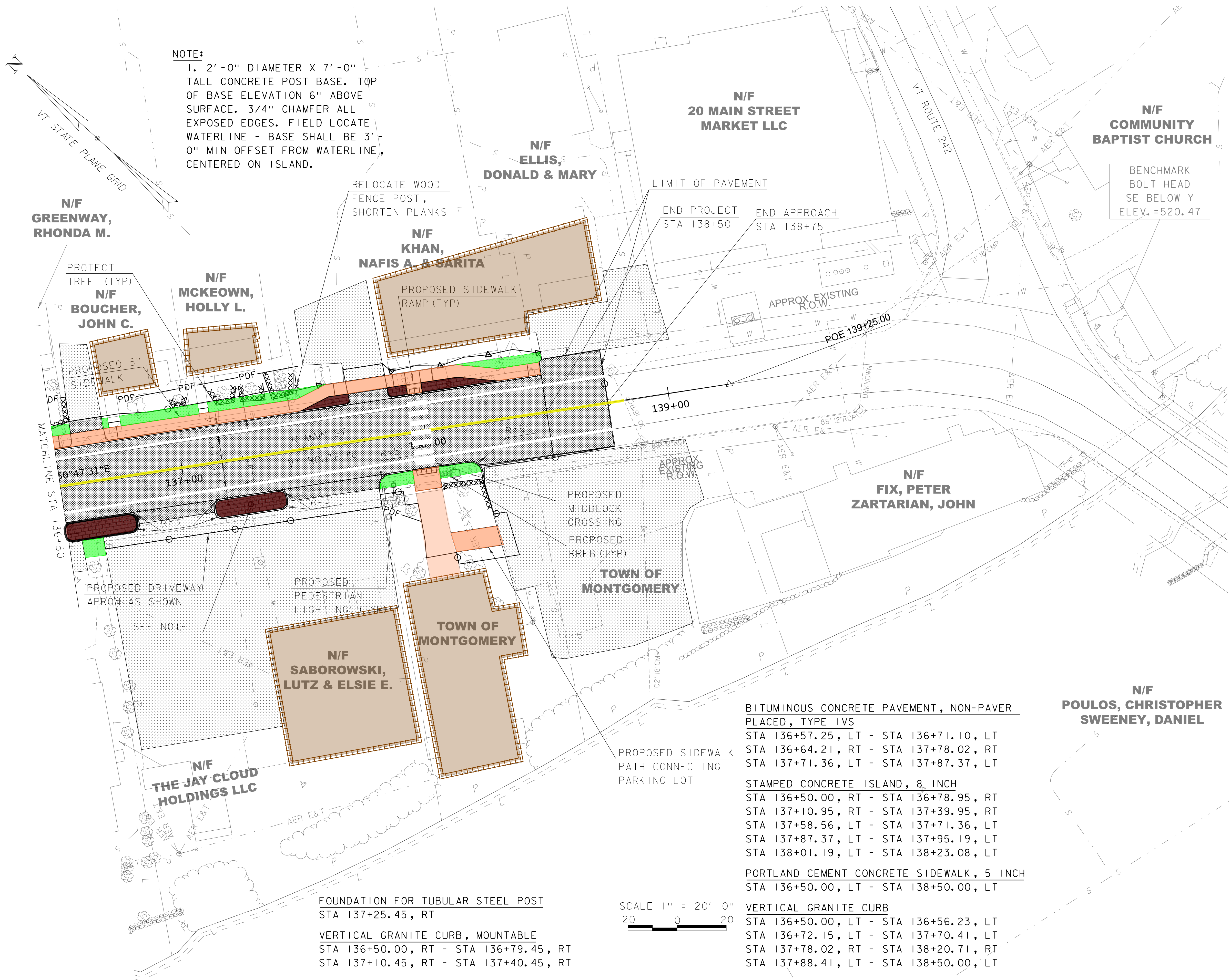
STAMPED CONCRETE ISLAND, 8 INCH
 STA 131+50.00, LT - STA 131+68.89, LT
 STA 134+58.80, LT - STA 134+75.86, LT
 STA 134+58.80, LT - STA 134+77.72, LT
 STA 134+94.72, LT - STA 135+10.22, LT
 STA 134+96.77, LT - STA 135+16.69, LT
 STA 135+15.22, LT - STA 135+18.72, LT
 STA 135+35.76, LT - STA 135+39.26, LT
 STA 135+44.26, LT - STA 135+57.72, LT

REV	DESCRIPTION	DATE

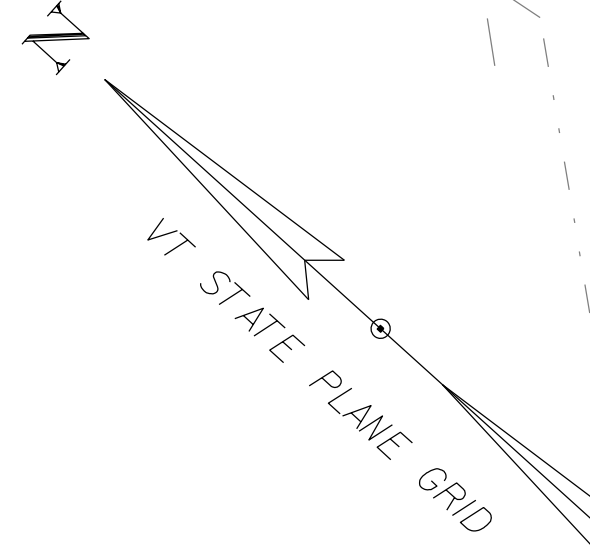
HOYLE TANNER
 125 College Street, 4th Floor • Burlington, VT 05401
 (802) 860-1331 • www.foyletanner.com

TOWN OF MONTGOMERY
 MONTGOMERY, VERMONT
 MONTGOMERY CENTER STREETSCAPE
 LAYOUT SHEET (6 OF 7)

PROJECT NO. 22.129801.00
 SHEET NO.
19
 SHEET 19 OF 106



NOTE:
 1. 2'-0" DIAMETER X 7'-0" TALL CONCRETE POST BASE. TOP OF BASE ELEVATION 6" ABOVE SURFACE. 3/4" CHAMFER ALL EXPOSED EDGES. FIELD LOCATE WATERLINE - BASE SHALL BE 3'-0" MIN OFFSET FROM WATERLINE, CENTERED ON ISLAND.



BENCHMARK
 BOLT HEAD
 SE BELOW Y
 ELEV. = 520.47

BITUMINOUS CONCRETE PAVEMENT, NON-PAVER PLACED, TYPE IVS
 STA 136+57.25, LT - STA 136+71.10, LT
 STA 136+64.21, RT - STA 137+78.02, RT
 STA 137+71.36, LT - STA 137+87.37, LT

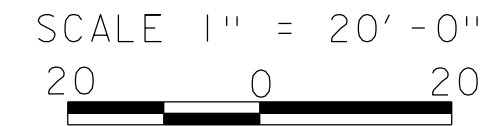
STAMPED CONCRETE ISLAND, 8 INCH
 STA 136+50.00, RT - STA 136+78.95, RT
 STA 137+10.95, RT - STA 137+39.95, RT
 STA 137+58.56, LT - STA 137+71.36, LT
 STA 137+87.37, LT - STA 137+95.19, LT
 STA 138+01.19, LT - STA 138+23.08, LT

PORTLAND CEMENT CONCRETE SIDEWALK, 5 INCH
 STA 136+50.00, LT - STA 138+50.00, LT

VERTICAL GRANITE CURB
 STA 136+50.00, LT - STA 136+56.23, LT
 STA 136+72.15, LT - STA 137+70.41, LT
 STA 137+78.02, RT - STA 138+20.71, RT
 STA 137+88.41, LT - STA 138+50.00, LT

FOUNDATION FOR TUBULAR STEEL POST
 STA 137+25.45, RT

VERTICAL GRANITE CURB, MOUNTABLE
 STA 136+50.00, RT - STA 136+79.45, RT
 STA 137+10.45, RT - STA 137+40.45, RT



REV	DESCRIPTION	DATE

WAPT PROJECT NO.	DESIGNED	DRAWN	CHECKED	DATE
TAP TA21(S)	ZAR	ZAR	XXX	APRIL 2024
FILENAME	2212980100bdr.lay	2212980100bdr.lay		
MODEL NAME	16V07	ZAR		
SCALE	AS SHOWN			

HOYLE TANNER

125 College Street, 4th Floor • Burlington, VT 05401
 (802) 860-1331 • www.hoyletanner.com

TOWN OF MONTGOMERY
 MONTGOMERY, VERMONT

MONTGOMERY CENTER STREETSCAPE

LAYOUT SHEET (7 OF 7)

PROJECT NO. 22.129801.00

SHEET NO.

20

SHEET 20 OF 106

4/29/2025 3:15:40 PM V:\PROJECTS\Montgomery-VT22_128801_00-Montgomery-Center-Streetscape\2-CADD\CutSheets\2212980100bdr.lay.dgn